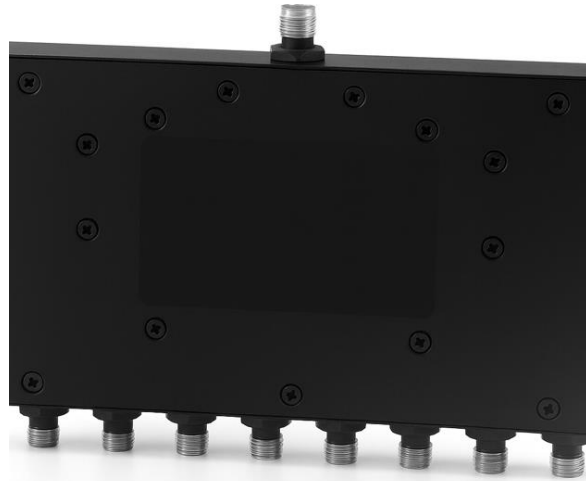


## NXS-8P-28 Power Splitter/Combiner

2–8 GHz | 8-Way | SMA Female



### Features

- ✚ Microstrip design
- ✚ SMA female connectors
- ✚ Frequency range: 2–8 GHz
- ✚ Low insertion loss
- ✚ Low VSWR
- ✚ High isolation

### Applications

- ✚ ISM / Bluetooth testing
- ✚ Wi-Fi communication systems
- ✚ Satellite communication
- ✚ Laboratory test & measurement

### Electrical Specifications

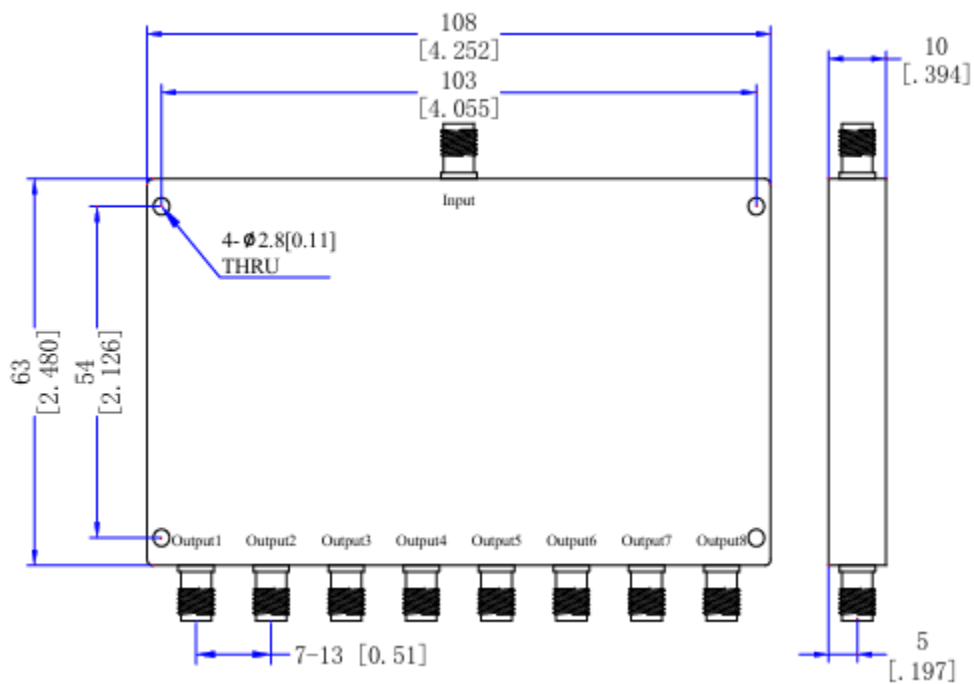
Parameter	Min.	Typ.	Max.	Unit
Frequency Range	2000		8000	MHz
Insertion Loss		≤1.5*		dB
Combined Port VSWR		1.16	1.35	–
Distribution Port VSWR		1.14	1.25	–
Isolation	18	25	–	dB
Amplitude Balance	-0.4		0.4	dB
Phase Balance	-5		5	degrees
Impedance		50		Ohms
Power Rating	Splitter:	30		W
	Combiner:	2		W
Operating Temp.	-45		85	°C

\* Excluding theoretical loss 9.0 dB

## Mechanical Specifications

Parameter	Specification
Port Connectors	SMA-Female
Dimensions	63 x 108 x 10 mm
Weight	160 g
Surface Finish	Black Paint

## Outline Drawing



Note: Dimensions(mm/[inch]),General tolerance( $\pm 0.3$ )

## Typical Performance Curves

